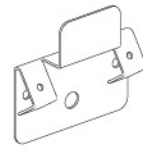


Parts



Wall Mounting Hangers

AnoFrame

Instructions for Hanging

Step 1

Install wall mounting hangers using either nails or screw. Hammer nails into wall or use a Phillips head screwdriver for screws. **Fig. 1**

Note: The use of togglebolts is recommended for drywall installations (predrilling 3/8" holes is necessary).

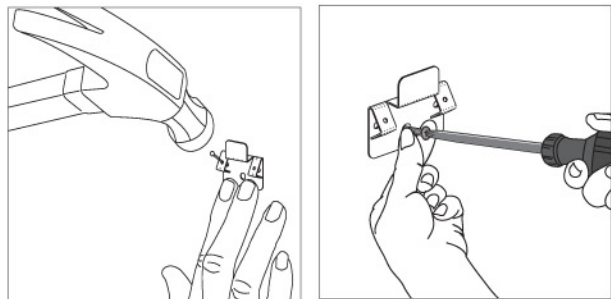


Figure 1

Step 2

Slide AnoFrame onto wall mounting clips. **Fig 2.**

Step 3

Insert poster. **Fig 3.**

If necessary, graphics can be inserted before hanging the AnoFrame.

Note: Available in either round or square profile.

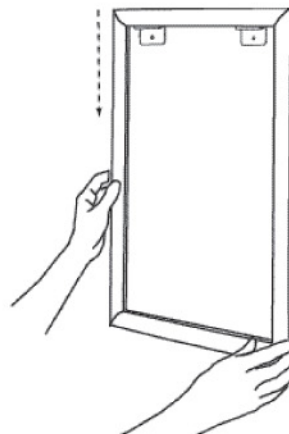
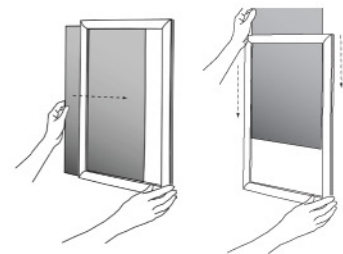


Figure 2



Side Load or Top Load

Figure 3