

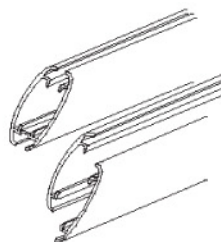
Parts



Ball Chains

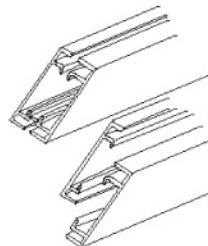


Corner brackets



AnoFrame Round Rails

or



AnoFrame Square Rails



Cable Clips

Instructions for assembly

Instructions illustrate a side-load frame. Assembly steps are the same for top-load.

Step 1

Insert corner brackets into vertical AnoFrame sides. Fig. 1 & Fig. 2. Note: Assembly brackets tension tabs face towards outside of frames. Split rail side is made up of 2 separate pieces.

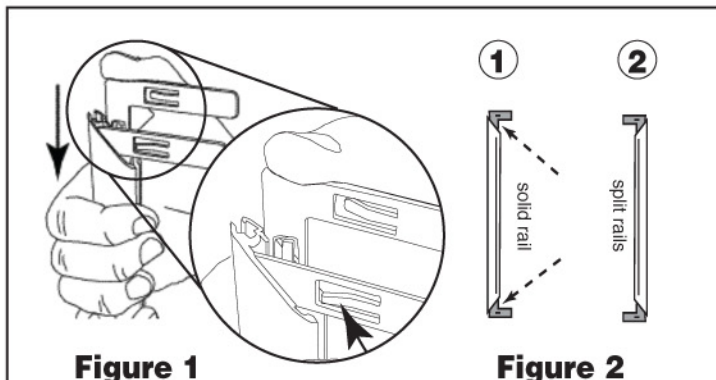


Figure 1

Figure 2

Step 2

Insert single ball of ball chain into inner channel of Cable Clip. The cable should snap into place. Fig. 3

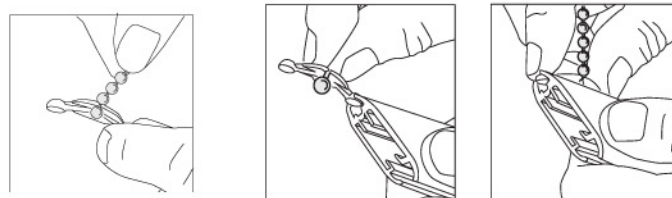


Figure 3

Figure 4

Step 3

Align one round end of cable clip with top channel of the aluminum rail and insert. Once in place, insert end of ball chain into channel. Then press down on the other round end of the cable clip and slide into rail by pushing on the clip. Fig. 4 Repeat steps 2 & 3 for second cable clip.

Note: Be sure to push on the cable clip in order to slide the ball chain into place. Do not pull on, or push against, the ball chain as this will cause it to bind in the channel.

Step 4

Assemble frame following steps in. Fig. 5 sliding sides together in the order shown.

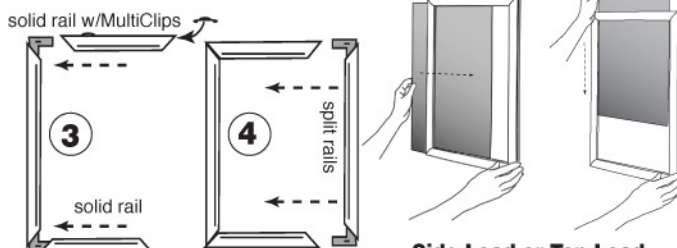


Figure 5

Figure 6

Step 5

Insert poster. Fig 6.