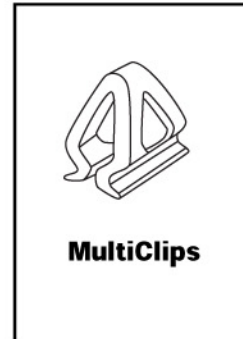
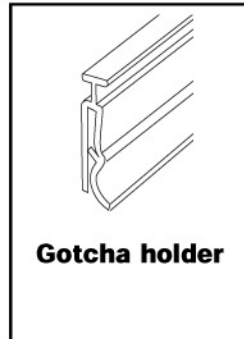


Parts



Instructions to hang graphic

Step 1

Place poster on a flat surface. Snap the Gotcha holder open so hinge is turned up as far as possible. Insert graphic completely into holder until edge of graphic meets top of holder. **Fig. 1** To close, snap the Gotcha holder shut. **Fig. 2**

Note: It is easier to open and close the Gotcha holder by starting at one end and working your way down the holder. With large or curling graphics, it may be easier to insert graphic at one end and slide into holder from one end to another.

Step 2

Insert Gotcha into AnoGotcha Plus Shell. **Fig 3**

Step 3

Squeeze sides of MultiClip together. **Fig. 4**
Align the bottom rail of the MultiClip with the top channel of the aluminum holder. Slide MultiClip into rail. **Fig. 5**

Step 4

Push end caps into place. **Fig 6**

To Change Graphic:

Rotate one end cap on each AnoGotcha Plus 180° and slide out Gotcha. **Fig. 7** Repeat steps 1 and 2. Insert Gotcha back into the AnoGotcha Plus and rotate the end cap back into position.

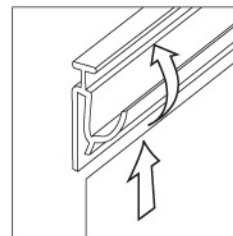


Figure 1

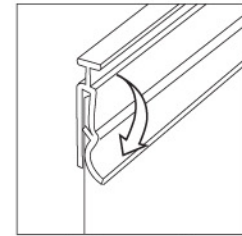


Figure 2

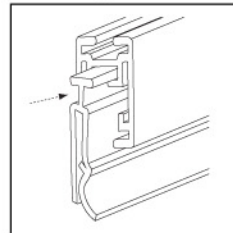


Figure 3

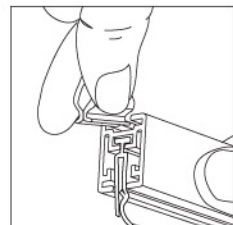


Figure 4

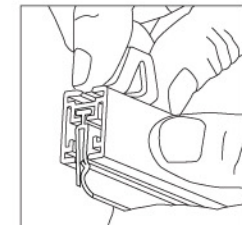


Figure 5

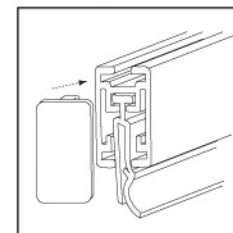


Figure 6

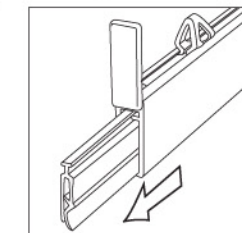


Figure 7