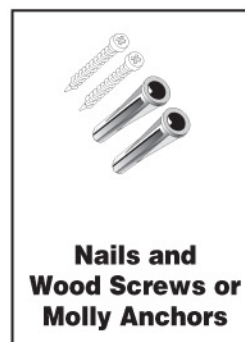
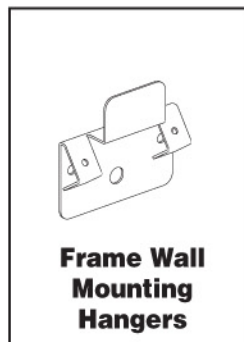
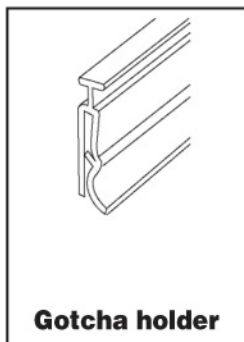
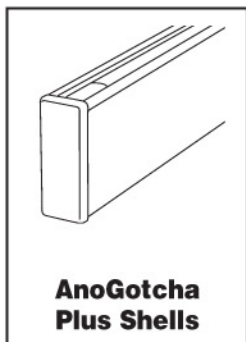


Parts



Instructions to hang graphic

Step 1

Place poster on a flat surface. Snap the Gotcha holder open so hinge is turned up as far as possible. Insert graphic completely into holder until edge of graphic meets top of holder. **Fig. 1** To close, snap the Gotcha holder shut. **Fig. 2**

Note: It is easier to open and close the Gotcha holder by starting at one end and working your way down the holder. With large or curling graphics, it may be easier to insert graphic at one end and slide into holder from one end to another.

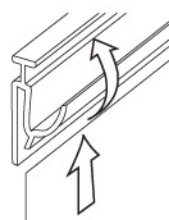


Figure 1

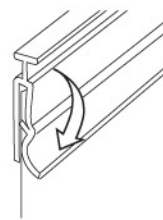


Figure 2

Step 2

Insert Gotcha into AnoGotcha Plus Shell. **Fig 3**

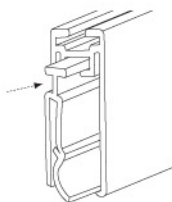


Figure 3

Step 3

Push end caps into place. **Fig 4**

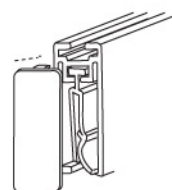


Figure 4

Step 4

Install wall mounting hangers using either nails or screw. Hammer nails into wall or use a Phillips head screwdriver for screws. **Fig. 5**

Note: The use of Molly Anchors are recommended for dry-wall installations (predrilling 3/16" holes is necessary).

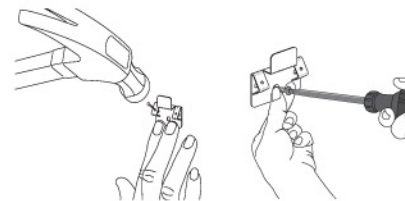


Figure 5

To Change Graphic:

Rotate one end cap on each AnoGotcha Plus 180° and slide out Gotcha. **Fig. 6.** Repeat steps 1 and 2. Insert Gotcha back into the AnoGotcha Plus and rotate the end cap back into position.

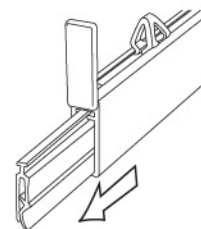


Figure 6