

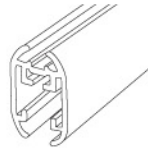
# AnoGotcha™ Stand

## Instruction Sheet

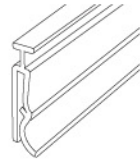
Read this instruction sheet carefully before assembly. Separate all parts and check quantities. Make sure all parts are accounted for before discarding any packaging materials.

### Parts

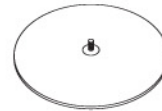
These are all the parts required to assemble 1 AnoGotcha Stand.



**AnoGotcha shell**



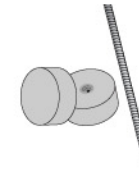
**T-Gotcha**



**9" round base**



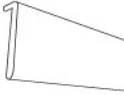
**vertical poles**



**(4) puck knobs & (2) threaded rods**



**shaped end caps**



**Thin graphic adaptor**

### Important terms:

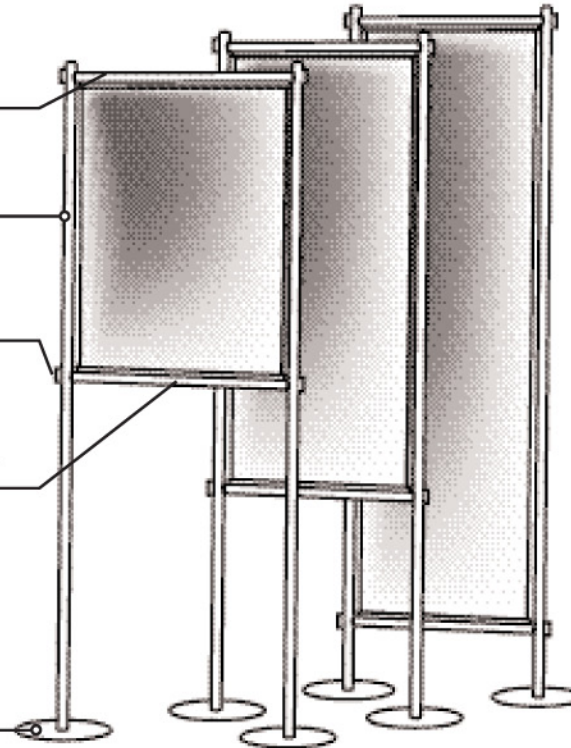
*top AnoGotcha holder*

*vertical post*

*puck knobs*

*bottom AnoGotcha holder*

*9" round base*



**Finished look.**

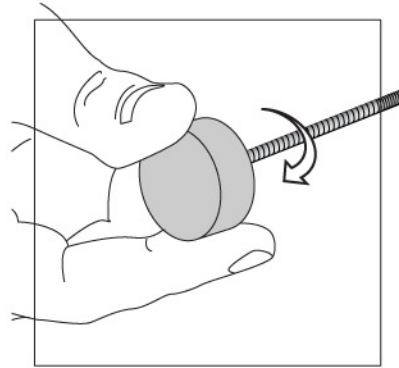
# AnoGotcha™ Stand *assembly continued*

## Step 1 Screw puck knobs onto threaded rods.

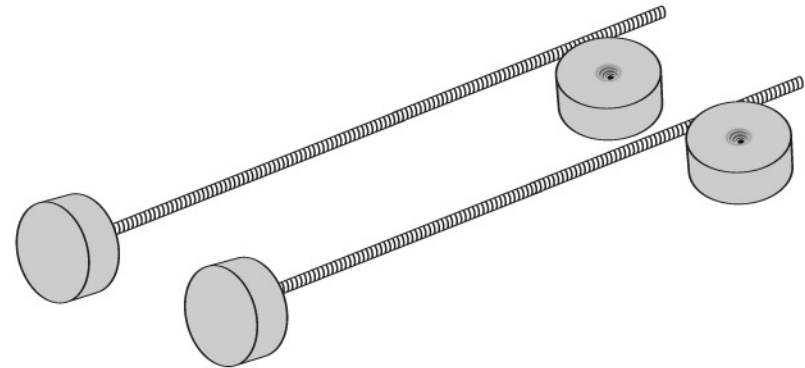
- Locate four puck knobs and two threaded rods.
- Screw one puck knob onto one end of each threaded rod.

### Note:

Do not screw a puck knob onto both ends of threaded rods.



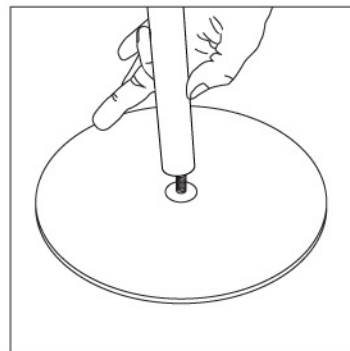
Screw puck knob on one end of threaded rod and tighten.



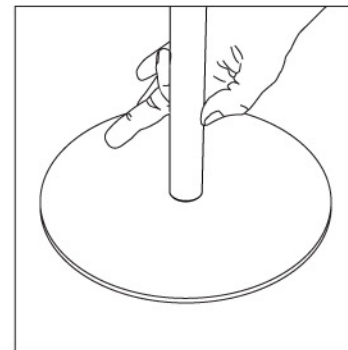
You should now have one puck knob on **one end** of each threaded rod.

## Step 2 Screw vertical poles onto 9" round bases.

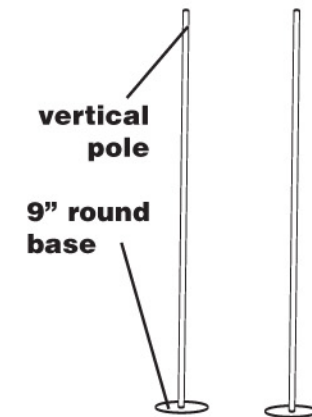
- Screw the end of one vertical pole onto the threaded stud of each 9" round base.
- Repeat for both poles.



Screw one vertical pole onto each 9" round base.



Tighten with hands.

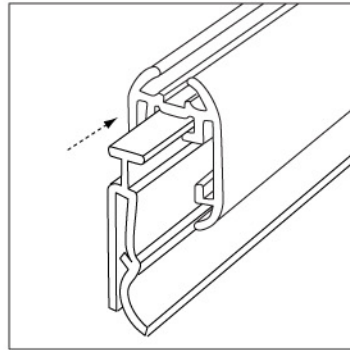


You should have two matching vertical poles with bases.

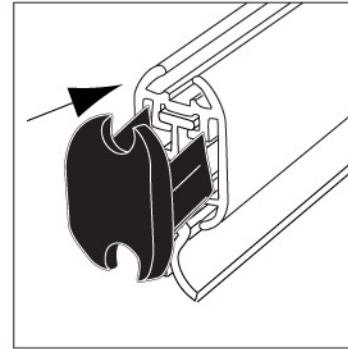
# AnoGotcha™ Stand *assembly continued*

## Step 3 Insert T-Gotcha holders into AnoGotcha shells.

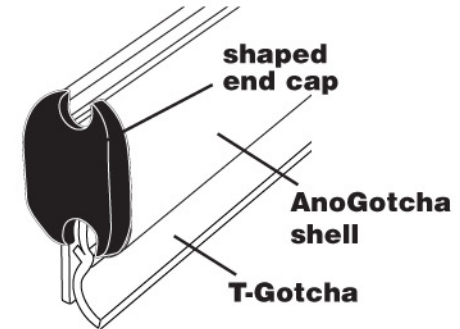
- Slide one T-Gotcha holder into each AnoGotcha shell.
- Attach one shaped end cap onto each end of both AnoGotcha shells.



Slide T-Gotcha holder into each AnoGotcha shell as shown.



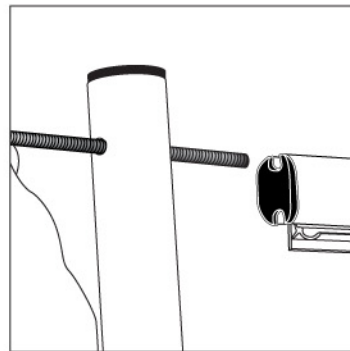
Attach one shaped end cap onto each end of AnoGotcha holders, as shown.



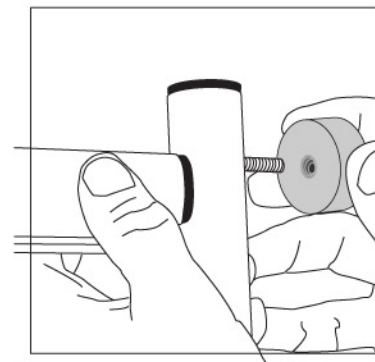
You should have two AnoGotcha holders with one shaped end cap on each end.

## Step 4 Attach top AnoGotcha holder onto vertical poles.

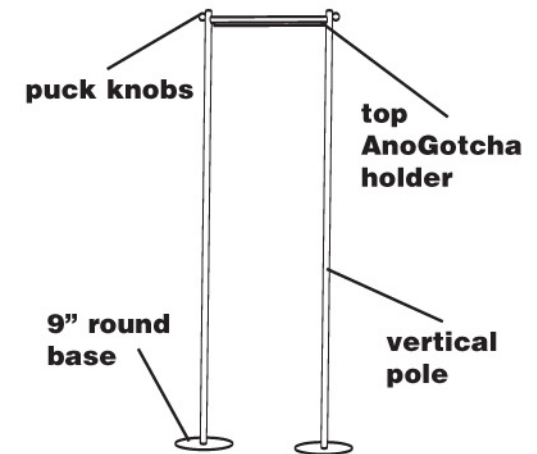
- Slide one threaded rod with puck knob (created in step 1) through top hole in one vertical pole (created in step 2).
- Slide threaded rod completely through top channel of one AnoGotcha holder (created in step 3) and through top hole of second vertical pole.
- Screw second puck knob onto other end of threaded rod. Tighten securely.



Slide threaded rod through the top hole of one vertical pole and then through top channel of one AnoGotcha holder.



Slide threaded rod through top hole in second vertical pole. Screw puck knob tightly onto threaded rod.



Your stand should now look like this.

# AnoGotcha™ Stand *assembly continued*

## Step 5 Attach bottom AnoGotcha holder to vertical poles.

- Choose the height slot that matches the length of your graphic.
- Slide one threaded rod with puck knob (created in step 1) through appropriate hole in one vertical pole (created in step 2) and through bottom channel of one AnoGotcha holder (created in step 3).
- Slide threaded rod through corresponding slot of second vertical pole.

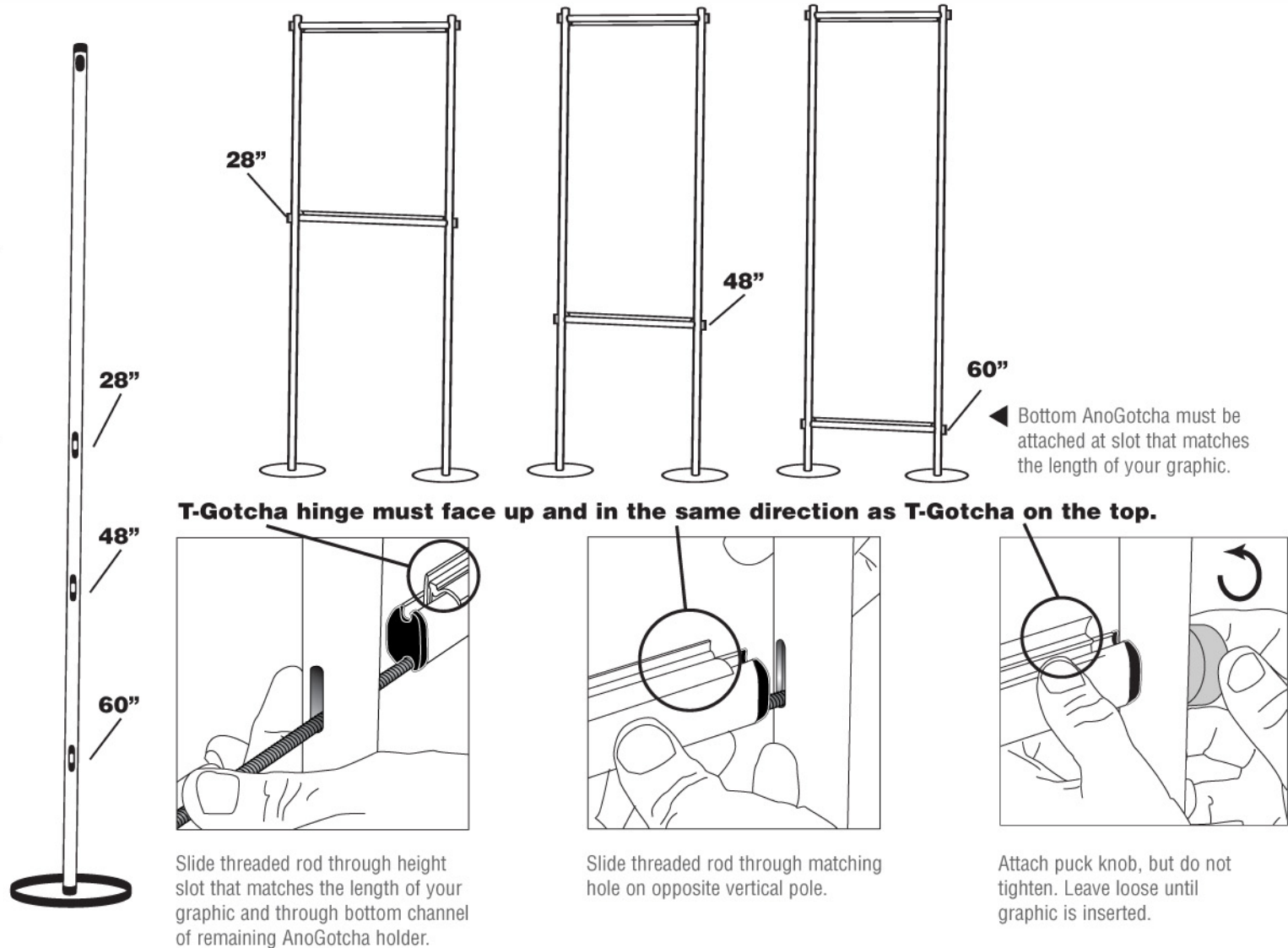
### Note:

Make sure the hinge on the bottom T-Gotcha faces up and in the same direction as the hinge on the T-Gotcha at the top of the stand.

- Loosely screw second puck knob onto end of threaded rod.

### Note:

Puck knob must be kept loose until graphic is inserted.

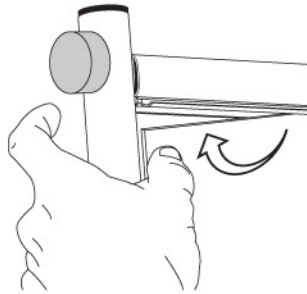


# AnoGotcha™ Stand *assembly continued*

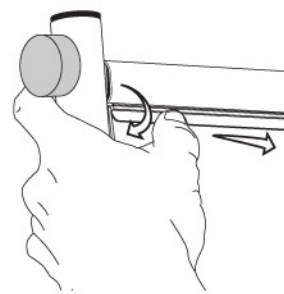
## Step 6 Insert your graphic into AnoGotcha Stand.

- Snap open top AnoGotcha holder completely. Slide graphic into holder until it reaches inside top of Gotcha. Snap AnoGotcha holder shut. It is easiest to close the holder by starting at one end and working your way to the other end.
- Repeat for bottom AnoGotcha holder.

### Poster inserted into top AnoGotcha holder.

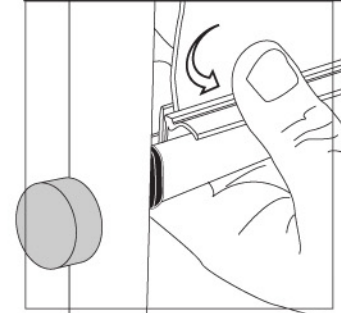


Insert graphic into top AnoGotcha holder.

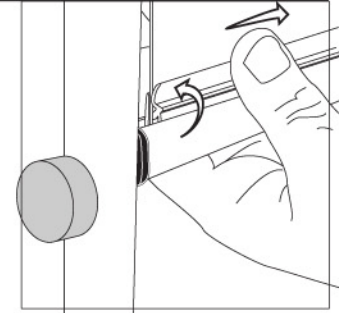


Snap the holder shut.

### Poster inserted into bottom AnoGotcha holder.



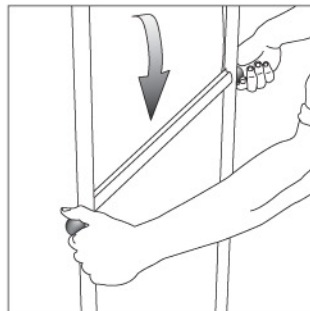
Insert graphic into bottom AnoGotcha holder.



Snap the holder shut.

## Step 7 Tension poster and tighten bottom AnoGotcha holder.

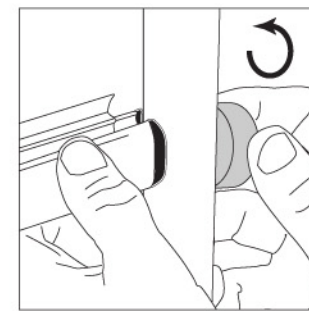
- Hold both puck knobs on bottom AnoGotcha holder, and pull down slightly, to tighten and straighten your graphic.
- Turn puck knobs in opposite directions to secure bottom AnoGotcha holder.



Hold both knobs and pull down slightly to tension graphic.



To tighten, turn puck knob in your left hand towards you.



Turn puck knob in your right hand away from you.

Your AnoGotcha stand is now complete and ready for display.



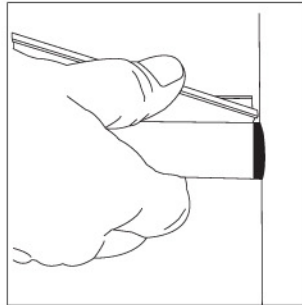
Your completed AnoGotcha Stand should look similar to this.

# AnoGotcha™ Stand *assembly continued*

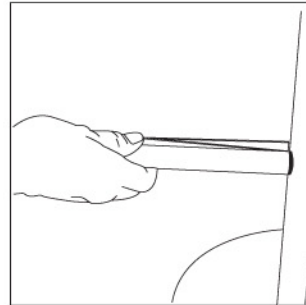
## Step 8 Place thin graphic adaptor into AnoGotcha holders (Optional).

- If you are using a thinner substrate and/or your graphic is printed on a slick substrate, use the thin graphic adaptor.
- Push adaptor between the plastic gotcha insert and the aluminum AnoGotcha shell.

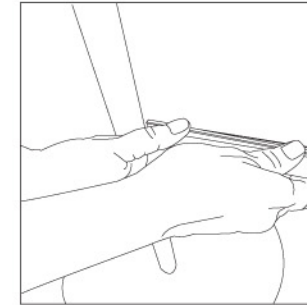
Your AnoGotcha stand is now complete and ready for display.



Place adaptor between AnoGotcha shell and the plastic Gotcha insert.



Push adaptor completely into the holder.



Your graphic should remain securely in place.



Your completed AnoGotcha Stand should look similar to this.