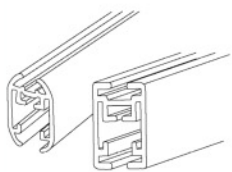


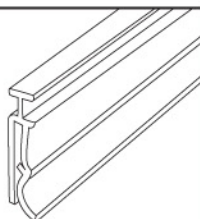
Parts



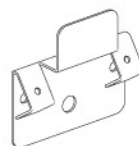
4 End Caps



AnoGotcha Shell
Round or Square



2
T-Top Gotcha



2 Frame Wall
Mounting
Hangers



2 Nails and 2
Wood Screws or
Molly Anchors

Instructions for Hanging

Step 1

Insert T-Top Gotcha Holder into AnoGotcha Shell. Fig. 1

Step 2

Push end caps into place. Fig. 2

Step 3

Snap the AnoGotcha Holder completely open so that hinge is turned up as far as possible. Insert poster into holder until top of poster meets top of holder. To close snap the AnoGotcha Holder shut. Fig. 3
With large or curling graphics, it may be easier to insert graphic at one end and slide into holder from one end to another.

Step 4

Install wall mounting hangers using either nails or screw. Hammer nails into wall or use a Phillips head screwdriver for screws. Fig. 4

Note: The use of Molly Anchors are recommended for drywall installations (predrilling 3/16" holes is necessary).

Step 5

Suspend poster.

Important note:

Please save and reuse the AnoGotcha Holder, End Caps and MultiClips for future projects.

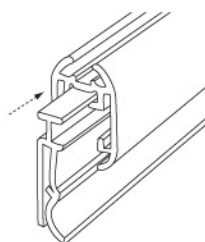


Figure 1

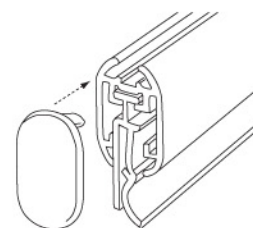


Figure 2

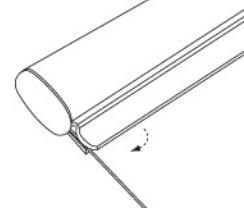
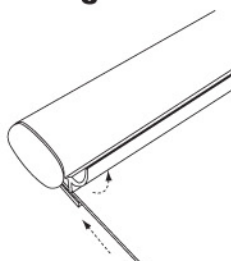


Figure 3

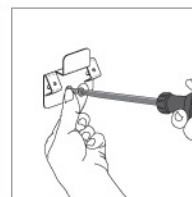
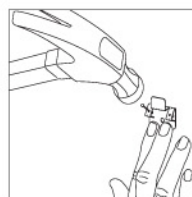


Figure 4