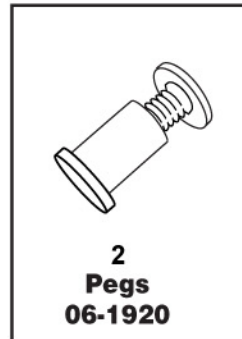
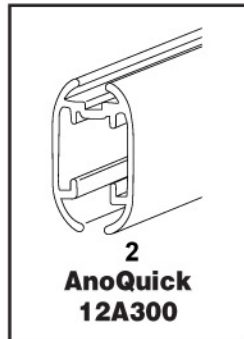


# AnoQuick™ with Peg Instruction Sheet

## Parts



## Instructions for Hanging

### Step 1

When using AnoQuick to hang 1/8" Sintra or an equally heavy substrate, have your printer punch two 1/4" holes along the top and bottom edges of print — or only the top if no bottom holder is being used. **Fig. 1**

**Note:** Each hole must be centered 1/4" in from the edge of the substrate.

### Step 2

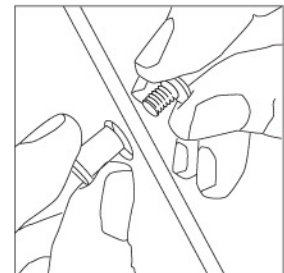
Push both parts of the peg together through each of the punched holes. **Fig. 2**

### Step 3

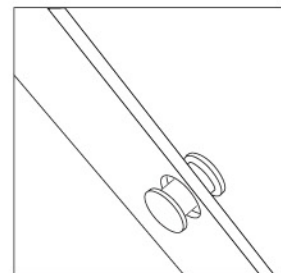
Slide AnoQuick onto substrate. The pegs should slide into the side rails. **Fig. 3**

**Note:** This is the easiest way to safely hang heavier substrates.

**Figure 1**



**Figure 2**



**Figure 3**

