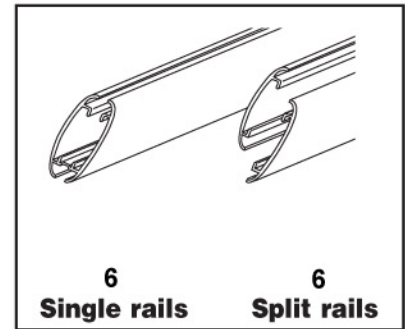
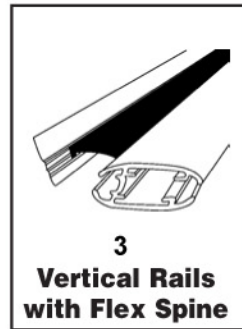
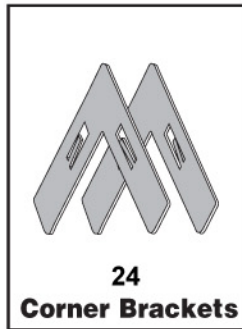
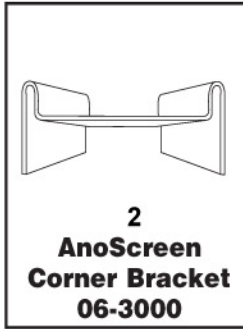


## Parts



## Instructions for Assembly

### Step 1

Insert corner brackets into ends of bottom rails, using thumb, as shown in illustration. 2 brackets per end of each rail.

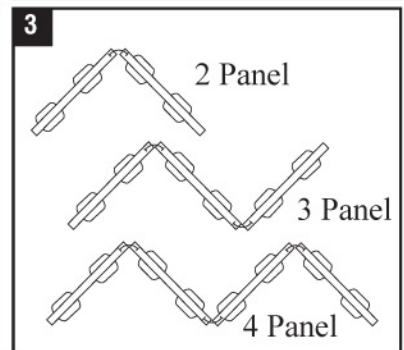
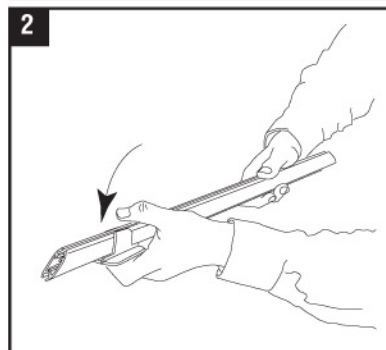
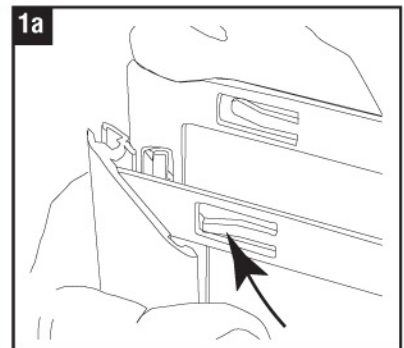
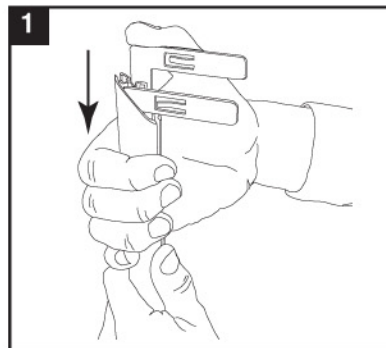
**DETAIL 1a-** Corner bracket tension tab faces toward outside of frame.

### Step 2

Snap one AnoFoot onto both the left and right sides of each bottom Ano rail section.

### Step 3

Lay out parts as they will be configured on the floor. (2, 3 or 4 panels)

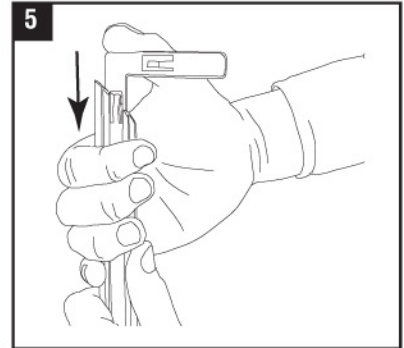
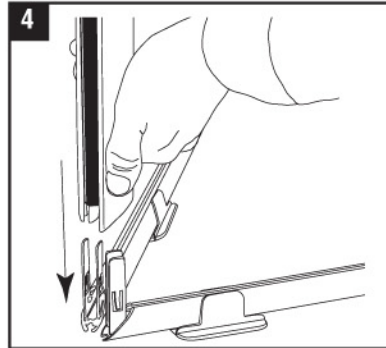


(continued on other side)

### Instructions for Assembly continued

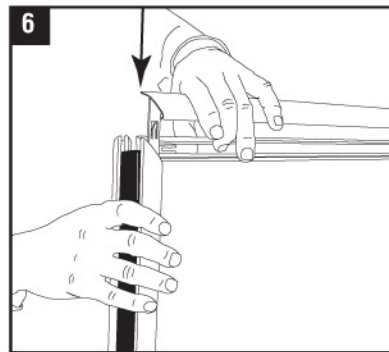
#### Step 4

Assemble the vertical rail assemblies onto the upward facing corner brackets already inserted into the bottom rails. All 4 brackets can go into the vertical rails at one time, or do one side at a time.  
**Note:** Use the two vertical rails without flex spine connectors on the outside edges of the outermost panels.



#### Step 5

Insert corner brackets into ends of split rails. 1 per end. Use thumb, as shown in illustration.

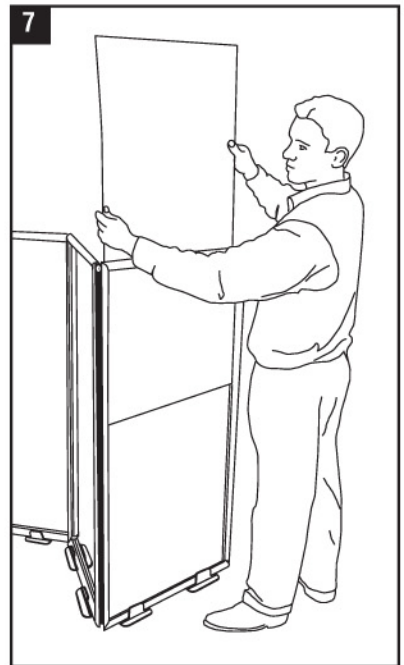


#### Step 6

Assemble split rails onto top ends of vertical rails, one inside and one outside of each panel of the AnoScreen.

#### Step 7

Insert and change signs through top of each panel.



#### Step 8

Snap AnoScreen corner brackets onto split rail at a 90° angle.

