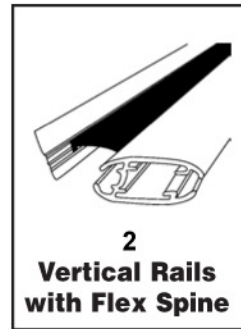
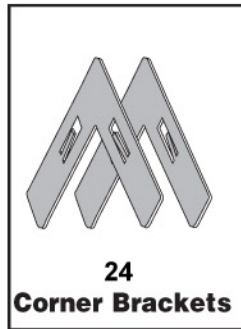
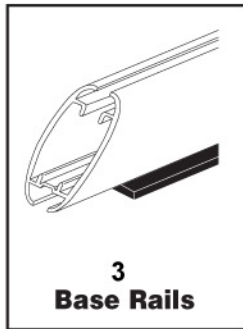
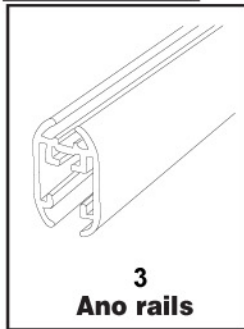


AnoScreen™ Instruction Sheet

Parts

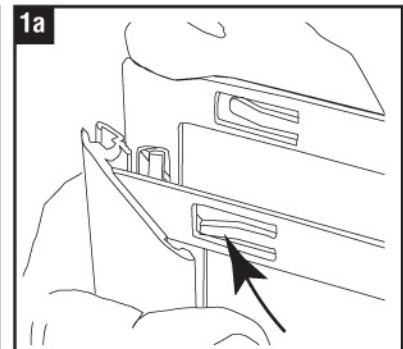
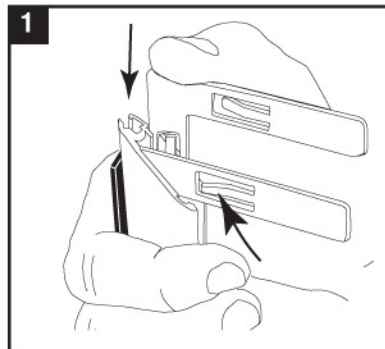


Instructions For Assembly

Step 1

Insert corner brackets into ends of bottom base rails, using thumb, as shown in illustration. 2 brackets per end of each rail. **Fig. 1**

Detail Fig. 1a- Corner bracket tension tabs face toward outside of frame.



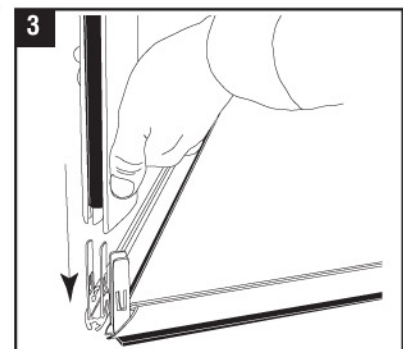
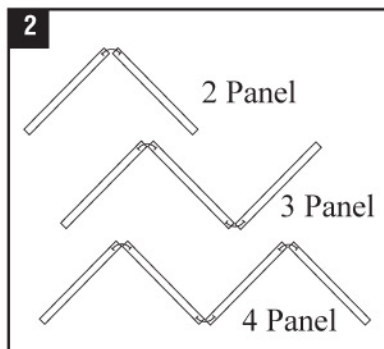
Step 2

Lay out parts as they will be configured on the floor. (2, 3 or 4 panels)

Step 3

Assemble the vertical rail assemblies onto the upward facing corner brackets already inserted into the bottom base rails. All 4 brackets can go into the vertical rails at one time, or you can do one side at a time.

Note: Make sure grommets are on the top end of the vertical panels. Use the two vertical rails without flex spine connectors on the outside edges of the outermost panels.

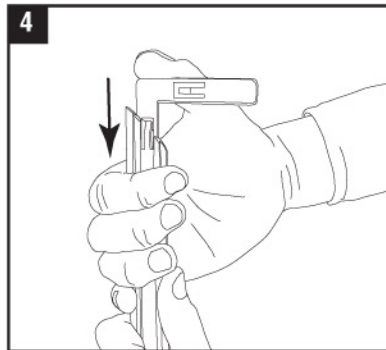


(continued on other side)

Instructions For Assembly Continued

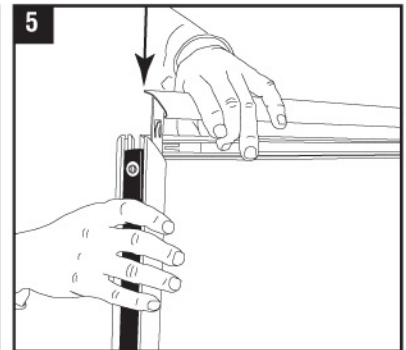
Step 4

Insert corner brackets into ends of split rails, using thumb, as shown in illustration. 1 bracket per end of each split rail.



Step 5

Assemble split rails onto top ends of vertical rails, one inside and one outside of each panel of the AnoScreen.



Step 6

Insert and change signs through top of each panel.

