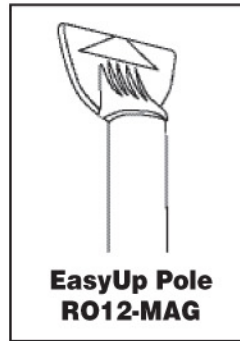
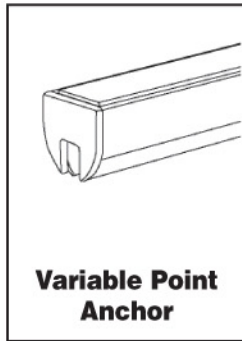
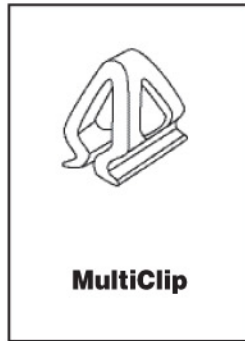


### Parts



### Instructions to hang graphic

#### Step 1

Squeeze sides of one MultiClip together. Align the rail of the MultiClip with the channel of the Variable Point Anchor. **Figure 1**

#### Step 2

Slide MultiClip into channel of anchor. **Figure 2**  
For best results, place 1/3 of the way in from each end. Repeat Steps 1 and 2 for second MultiClip.

#### Step 3

Insert top end of EasyUp pole into slot on either side of anchor. Align anchor to ceiling grid and attach. **Figure 3**

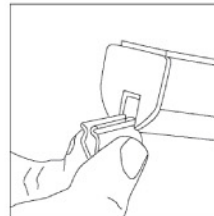
#### Step 4

Swing pole parallel to graphic to release pole. **Figure 4**

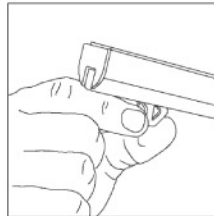
### Instructions to change graphic

Insert end of EasyUp pole into slot on either side of anchor. Swing pole away from graphic and towards yourself to detach from ceiling. **Figure 5**

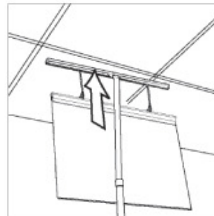
Repeat Steps 1-7 to hang different graphics.



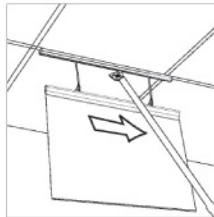
**Figure 1**



**Figure 2**



**Figure 3**



**Figure 4**



**Figure 5**