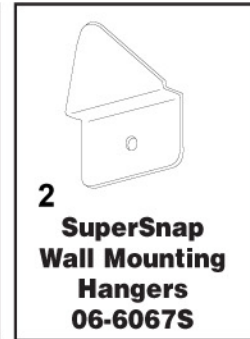
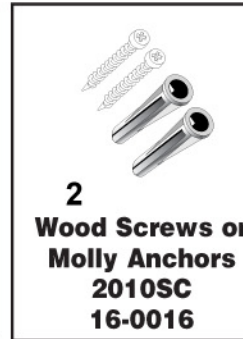
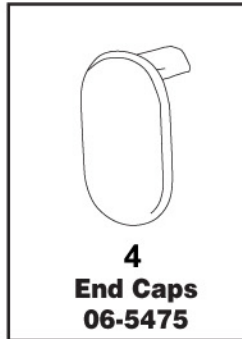
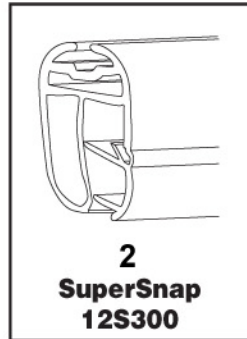


Parts



Instructions for assembly

Step 1

Snap the SuperSnap open and insert poster (top and bottom). **Fig. 1**
Note: It is easier to open and close the SuperSnap by starting at one end and working your way down the holder.

Step 2

To close, snap the SuperSnap shut. **Fig. 2**

Step 3

Push end caps into place. **Fig. 3**

Step 4

Install Wall Mounting Hangers using wood screws and a Phillips head screwdriver. Make sure that the Wall Mounting Hangers are level. **Fig. 4**
Note: The use of Molly Anchors are recommended for drywall installations (predrilling 3/16" holes is necessary).

Step 5

Suspend poster.

Important note:

Please save and reuse the SuperSnap, End Caps, and Wall Mounting Hangers for future projects.

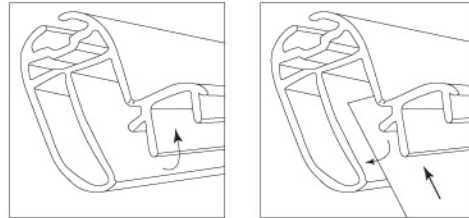


Figure 1

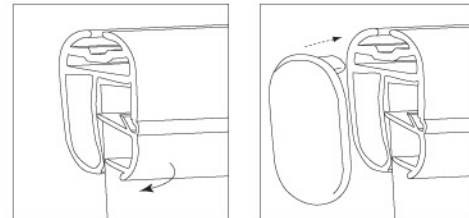


Figure 2

Figure 3

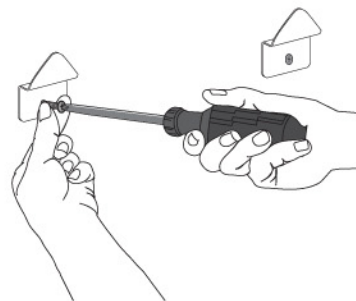


Figure 4