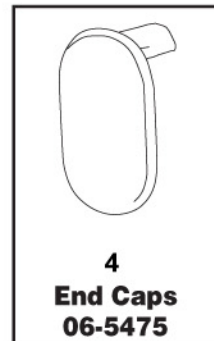
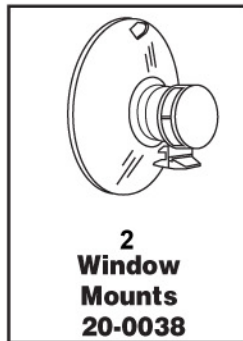
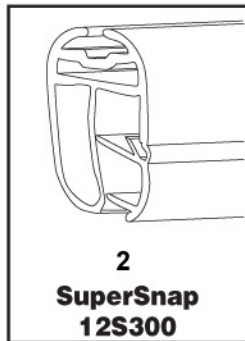


## Parts



## Instructions for assembly

### Step 1

Snap the SuperSnap open and insert poster (top and bottom). **Fig. 1**

**Note:** It is easier to open and close the SuperSnap by starting at one end and working your way down the holder.

### Step 2

To close, snap the SuperSnap shut. **Fig. 2**

### Step 3

Slide Window Mounts into the top rail of the SuperSnap. **Fig. 3**

### Step 4

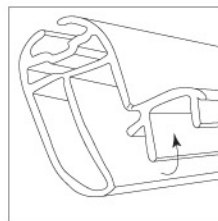
Push end caps into place. **Fig 4**

### Step 5

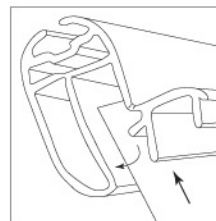
Suspend poster. **Finished Look**

### Important note:

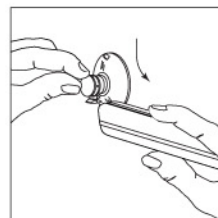
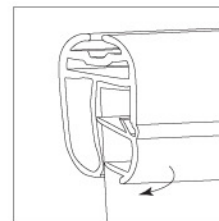
Please save and reuse the SuperSnap, Window Mounts and End Caps for future projects.



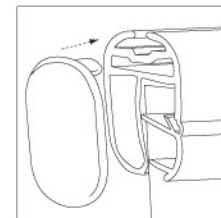
**Figure 1**



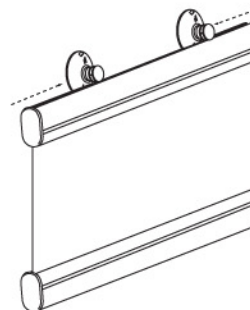
**Figure 2**



**Figure 3**



**Figure 4**



**Finished Look**